

# How Covid-19 compares with other outbreaks

Covid-19 spreads quickly like cold or flu but has killed over 370,000 in the last six months. **Clara Chong** compares the current pandemic with three previous outbreaks.

	TOTAL CASES	TOTAL DEATHS	FATALITY RATE: Calculated by taking death numbers over infection numbers
<b>Covid-19</b>	More than <b>6.2 million</b>	More than <b>370,000</b>	<b>Less than 6%</b>
<b>H1N1</b>	Around <b>1.5 billion</b>	More than <b>280,000</b>	← About <b>0.02%</b>
<b>Sars</b>	Around <b>8,000</b>	<b>774</b>	<b>9.6%</b>
<b>Mers</b>	Around <b>2,500*</b>	<b>876</b>	Around <b>35%</b>

\*As of March 31, based on WHO figures

## Severe acute respiratory syndrome (Sars)

Nov 2002 to July 2003

Viral respiratory disease first identified in China in 2002. Caused by coronavirus Sars-CoV.

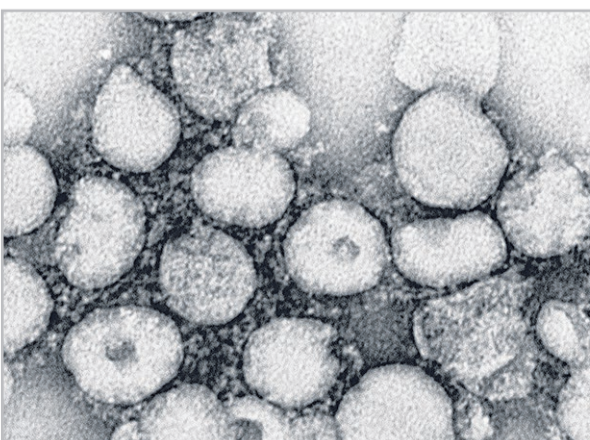
- Two to seven days before infected people show symptoms.
- People are most likely to be contagious only when they have symptoms such as fever or cough. Patients are most contagious during the second week of illness.

### BASIC REPRODUCTION NUMBER (R0)

- Approximately three, which means one infected person spreads it to three others.

### CURRENT STATUS

- The World Health Organisation (WHO) declared that the Sars outbreak had been contained in July 2003.



## H1N1

Around March 2009

In early 2009, a new strain of influenza A H1N1 virus emerged and caused respiratory infections in humans. Because it was similar to a form of influenza that circulated in pigs since the 1918 influenza pandemic, it is commonly referred to as swine flu.

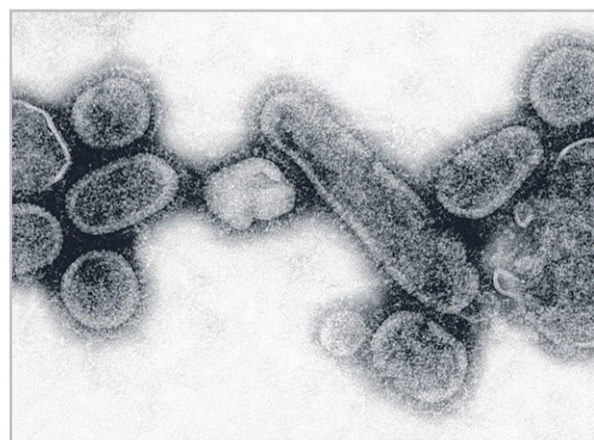
- People can be contagious one day before onset of illness.
- Most people will shed the virus and are possibly contagious for five to seven days after onset of illness.

### BASIC REPRODUCTION NUMBER (R0)

- Estimated to be around 1.2 but the literature has conflicting estimates.

### CURRENT STATUS

- The virus is now endemic and a "seasonal" influenza strain – constantly circulating among the population.



## Middle East respiratory syndrome (Mers)

Around April 2012

A viral respiratory disease first identified in Saudi Arabia in 2012. Caused by coronavirus Mers-CoV.

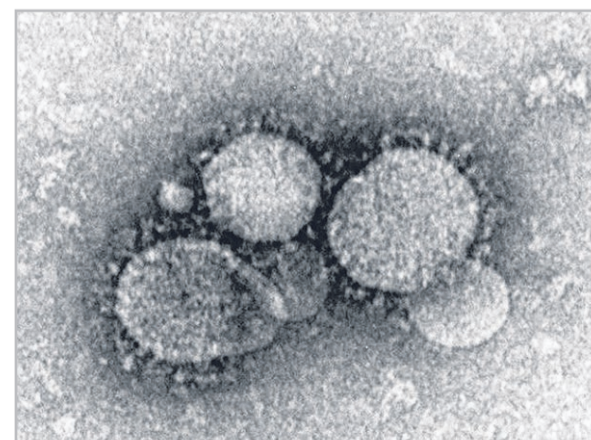
- Takes five days in general for a person to become infectious.
- Median time from onset of illness to hospitalisation is approximately four days.

### BASIC REPRODUCTION NUMBER (R0)

- More than one in certain hospital settings where infection is present.

### CURRENT STATUS

- Still present in pockets in the Middle East but healthcare systems around the world are now more aware and vigilant, and relatively more prepared to deal with it.



## Covid-19

Around Dec 2019

First reported by officials in Wuhan, China, in December 2019. Caused by coronavirus Sars-CoV-2.

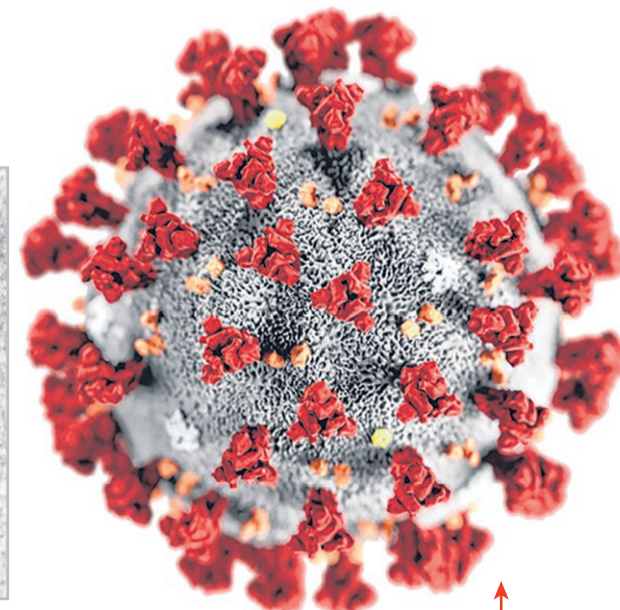
- Median incubation period of around five days. People may be infectious two days before the onset of symptoms.
- Most patients no longer pose a risk of spreading the disease after 11 days.

### BASIC REPRODUCTION NUMBER (R0)

- Globally, the R0 for Covid-19 is estimated to be between two and three.

### CURRENT STATUS

- Global pandemic.



NOTE: Figures as of May 31, 2020

Sources: WORLD HEALTH ORGANISATION, CENTERS FOR DISEASE CONTROL AND PREVENTION, MAYO CLINIC, WORLDOMETER, REUTERS, BEAN A, BAKER M, STEWART C ET AL. STUDYING IMMUNITY TO ZOOONOTIC DISEASES IN THE NATURAL HOST – KEEPING IT REAL. NATURE REVIEWS: IMMUNOLOGY 2013;13:851-61 PHOTOS: CDC, REUTERS STRAITS TIMES GRAPHICS