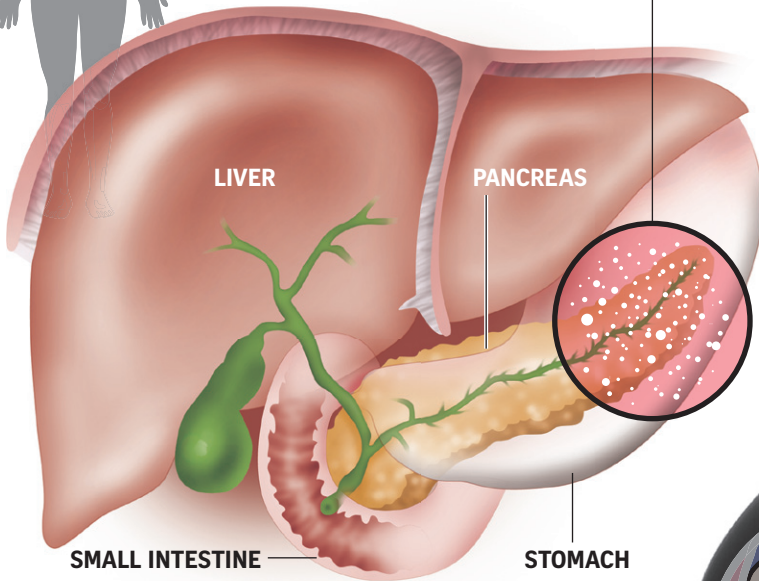
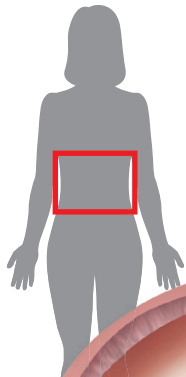


Gestational diabetes

• When a pregnant woman has gestational diabetes, her pancreas produces more insulin to cope with the high level of blood sugar or glucose.



• The insulin does not cross the placenta, but the glucose does, giving the baby high blood glucose levels.

• The extra energy from the glucose becomes fat, sometimes resulting in a big baby.

• The baby's pancreas will produce insulin to counter this.

• Excess insulin raises the baby's risk of being obese or diabetic in future.

