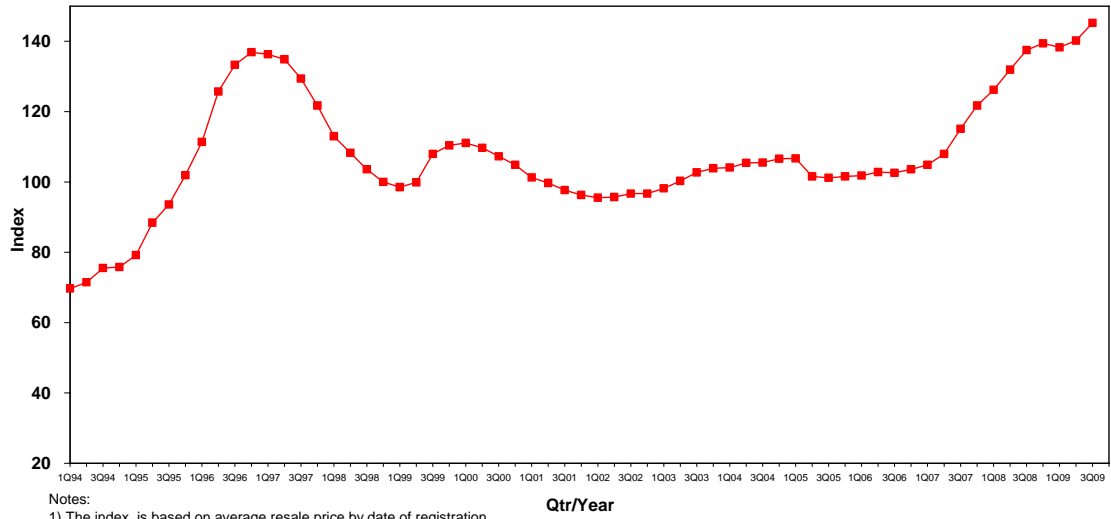


ANNEX A-1

Table A-1: HDB Resale Price Index, 1Q1990-3Q2009 (4Q1998 = 100)

Period		Index	Percentage Change From The Previous Quarter
2009	III	145.2	3.6%
	II	140.2	1.4%
	I	138.3	-0.8%
2008	IV	139.4	1.4%
	III	137.5	4.2%
	II	131.9	4.5%
	I	126.2	3.7%
2007	IV	121.7	5.7%
	III	115.1	6.6%
	II	108.0	3.0%
	I	104.9	1.3%
2006	IV	103.6	1.0%
	III	102.6	-0.2%
	II	102.8	1.0%
	I	101.8	0.2%
2005	IV	101.6	0.4%
	III	101.2	-0.4%
	II	101.6	-4.8%
	I	106.7	0.1%
2004	IV	106.6	1.0%
	III	105.5	0.1%
	II	105.4	1.2%
	I	104.1	0.2%
2003	IV	103.9	1.2%
	III	102.7	2.4%
	II	100.3	2.1%
	I	98.2	1.6%
2002	IV	96.7	0.0%
	III	96.7	1.0%
	II	95.7	0.2%
	I	95.5	-0.8%
2001	IV	96.3	-1.4%
	III	97.7	-2.0%
	II	99.7	-1.6%
	I	101.3	-3.4%
2000	IV	104.9	-2.2%
	III	107.3	-2.2%
	II	109.7	-1.3%
	I	111.1	0.6%
1999	IV	110.4	2.2%
	III	108.0	8.1%
	II	99.9	1.4%
	I	98.5	-1.5%
1998	IV	100.0	-3.5%
	III	103.6	-4.3%
	II	108.3	-4.2%
	I	113.0	-7.1%
1997	IV	121.7	-6.0%
	III	129.4	-4.1%
	II	134.9	-1.0%
	I	136.3	-0.4%
1996	IV	136.9	2.7%
	III	133.3	6.0%
	II	125.7	12.8%
	I	111.4	9.3%
1995	IV	101.9	8.9%
	III	93.6	5.9%
	II	88.4	11.6%
	I	79.2	4.5%
1994	IV	75.8	0.4%
	III	75.5	5.6%
	II	71.5	2.6%
	I	69.7	2.8%
1993	IV	67.8	2.9%
	III	65.9	20.3%
	II	54.8	31.1%
	I	41.8	5.6%
1992	IV	39.6	2.3%
	III	38.7	2.1%
	II	37.9	6.2%
	I	35.7	2.9%
1991	IV	34.7	-0.6%
	III	34.9	-0.9%
	II	35.2	2.0%
	I	34.5	1.2%
1990	IV	34.1	-1.4%
	III	34.6	2.4%
	II	33.8	0.6%
	I	33.6	

PRICE INDEX OF HDB RESALE FLATS



Notes:
 1) The index is based on average resale price by date of registration.
 2) 4Q98 is adopted as the base period with index at 100.
 3) Weights are based on 12-quarter moving average transactions.