

Beware of MALARIA

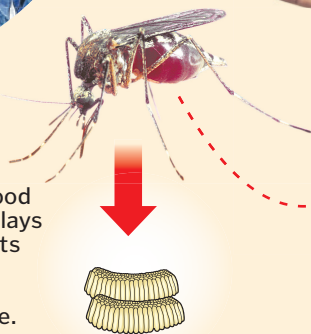
An outbreak of malaria has hit Singapore and the Ministry of Health is investigating two clusters of the disease involving 15 people. VICTORIA VAUGHAN looks at how it is transmitted.

1 INFECTED MAN
He can pass the malaria parasite to the female Anopheles mosquito. Malaria can take seven days to several months to incubate in humans, depending on which disease strain it is.

2 MOSQUITO GETS INFECTED
When a mosquito picks up the parasite from a human it takes 10 to 18 days to develop in the mosquito's salivary glands.

3 MALARIA IS PASSED ON
Transmission occurs from the infected mosquito's saliva when it bites another person

4 MOSQUITO LAYS EGGS
Following the blood meal the female lays her eggs and rests for two to three days before continuing to bite.

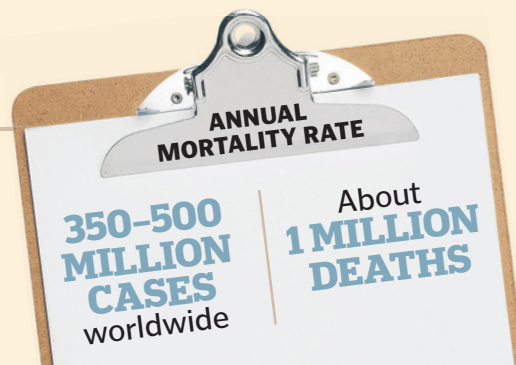


COMMON SYMPTOMS

- Fever
- Headache
- Chills
- Vomiting

TREATMENTS

Ideally treatment should be administered within the first 24 hours of showing symptoms. Drugs are given to kill the parasite in the blood and the liver.



HOW TO CONTROL THE SPREAD OF MALARIA.

- Diagnosis of malaria cases and treatment with effective medicines
- Use of insecticide-treated nets at night to prevent mosquito bites
- Reduce mosquito breeding grounds such as standing water
- Carry out indoor residual spraying - application of long-acting chemical insecticides - on the walls and roofs to kill mosquitoes
- Use of mosquito repellents