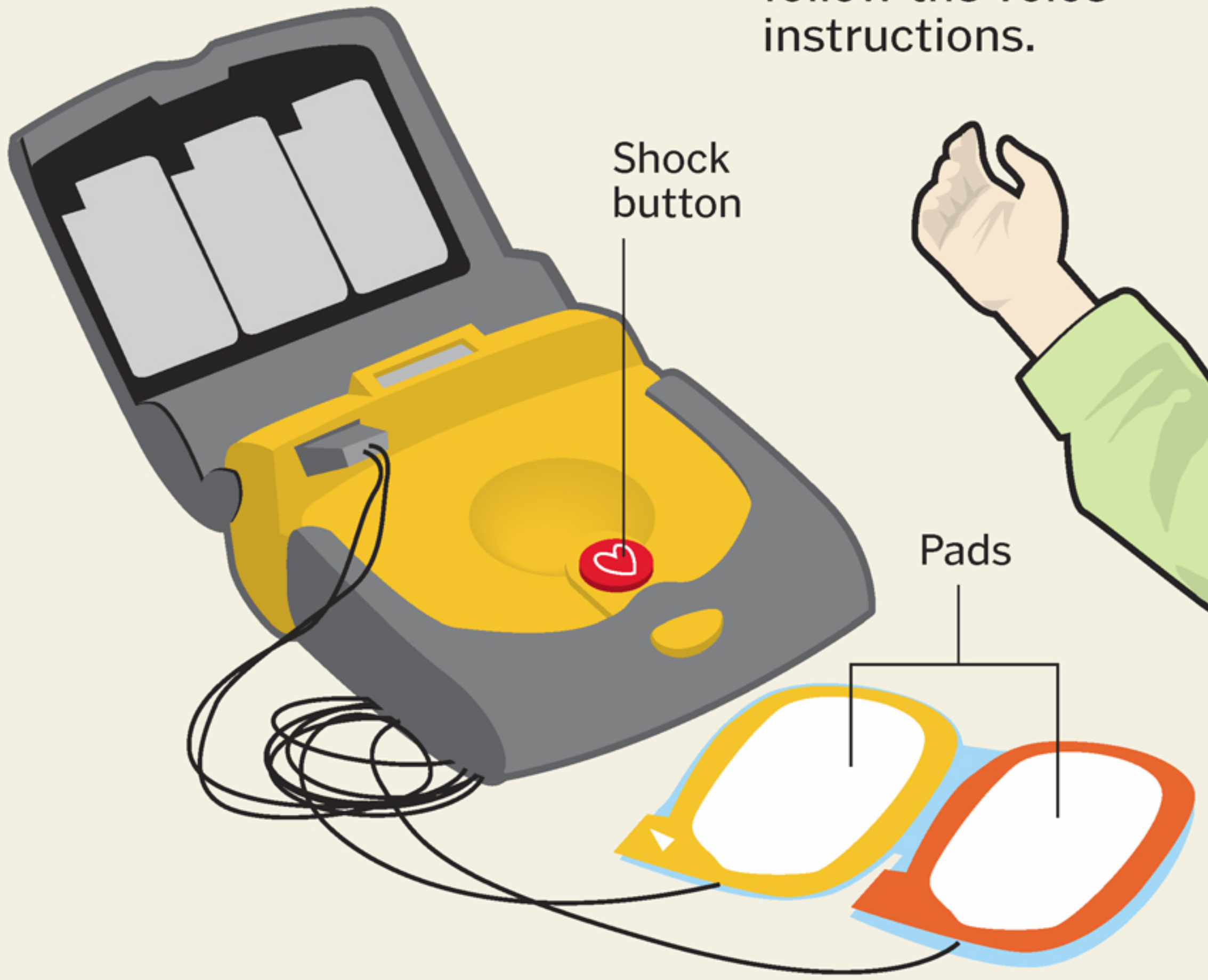


# ■ HOW TO USE AN AUTOMATED EXTERNAL DEFIBRILLATOR (AED)

AEDs have the basic voice prompt to guide the user, a shock button and two pads.

- 1** Remove the victim's clothing to expose the chest area.
- 2** Turn on the AED and follow the voice instructions.

**3** Stick the two pads on to the bare chest.



- 4** Wait while the AED analyses the heart rhythm.
- 5** Press the shock button when prompted to and stay clear of the victim.

