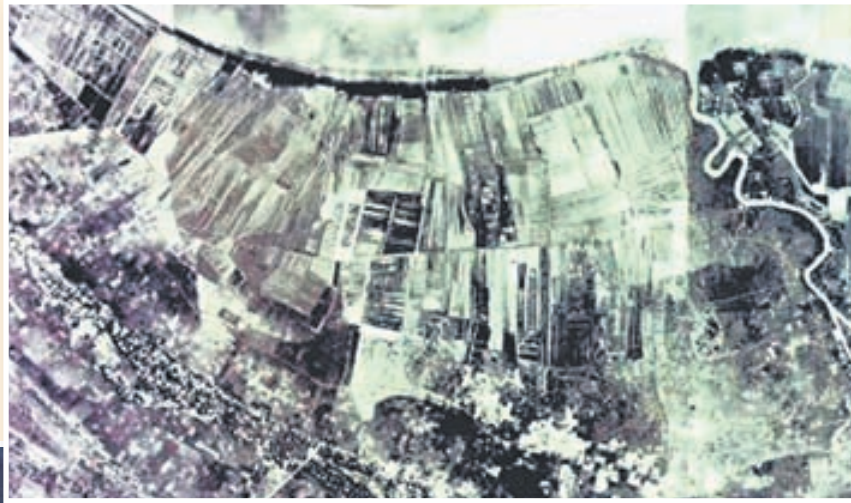


## » SINKING CITY

Over-development of Jakarta is causing the city to sink. On Dec 6, 2025, the next peak of an 18.6-year astronomical cycle, sea levels will rise enough to engulf much of the low-lying Indonesian capital.



Satellite photos showing the rapid development that has taken place in the Jakarta area over the last 23 years, from 1980 (left) to 2003 (bottom)

